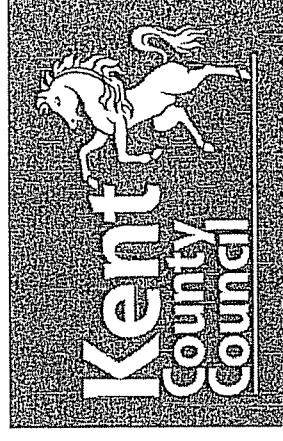


---

# Renewable Energy Select Committee – one year on

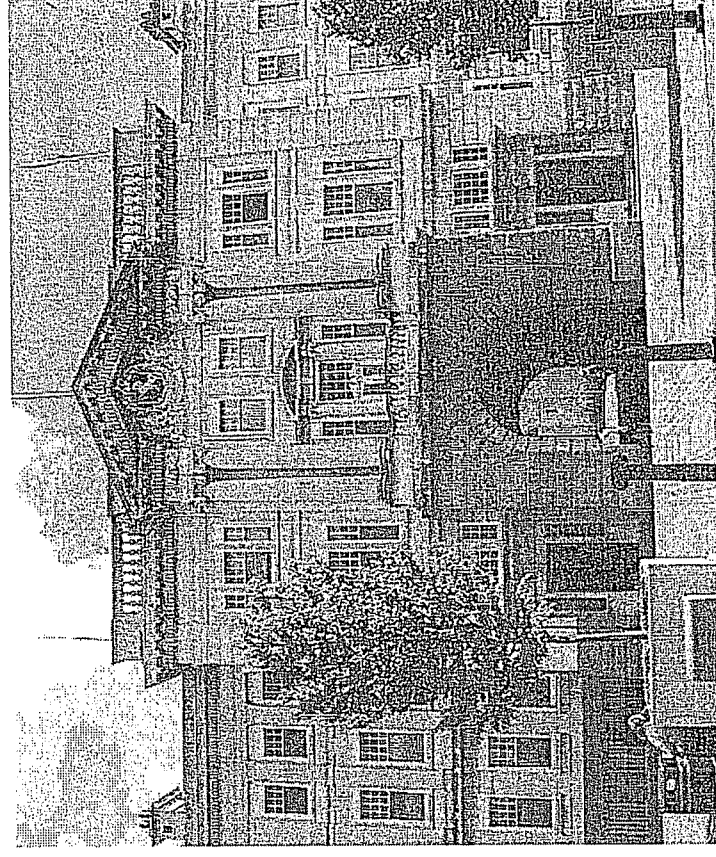
Carolyn McKenzie  
Planning and Environment



---

## Saving energy, saving public money, saving carbon (1,3,5,8,9,10,)

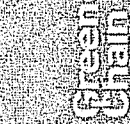
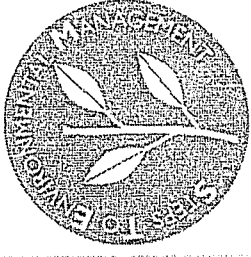
- Renewable Energy Study
- £4m savings +/-5% reduction CO<sup>2</sup>
  - Invicta/session lighting - £200k
  - Server virtualisation project
- 28 Renewable Energy Project
- Solar review - £250k solar project
- Biomass project – schools
- LED display metres
- Kent Climate Change Network



# Growing the economy, saving money (17)

- 500+ businesses assisted, £4m savings
- Promotion Green Chain/KEIBA
- Industry specific support
  - Wind
  - Biomass
- Two Seas Trade
- Skills Swale Skills Centre

## The South East Business Carbon Hub and STEM



[WWW.GREENCHAIN.ORG.UK](http://WWW.GREENCHAIN.ORG.UK)

Whether you are a home owner or company director, Green Chain is a FREE directory of businesses that are able to help you reduce the environmental impact of your buildings, vehicles and outdoor spaces whilst saving money on your bills.

**Buyers' Guides** clearly explain each technology and what you need to know so you can feel confident about what you buy.

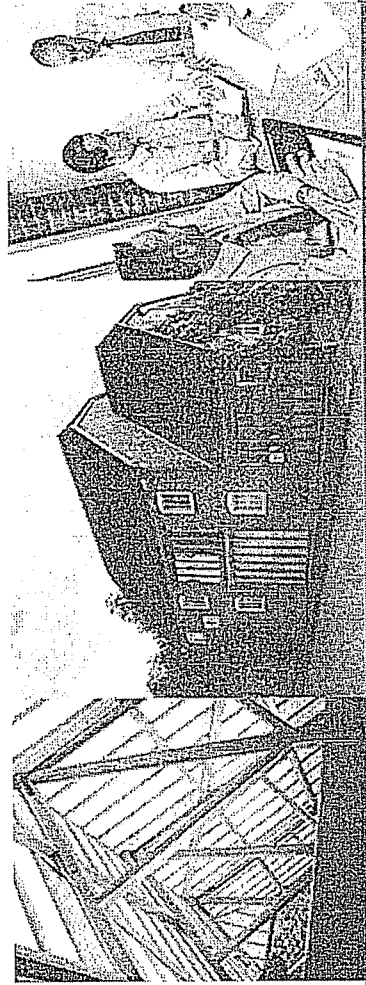
**Businesses** - If you provide green technologies or services in the South East, visit Green Chain to register or fires with this Low Carbon Essentials service and start reaching potential customers now.

[www.greenchain.org.uk](http://www.greenchain.org.uk)

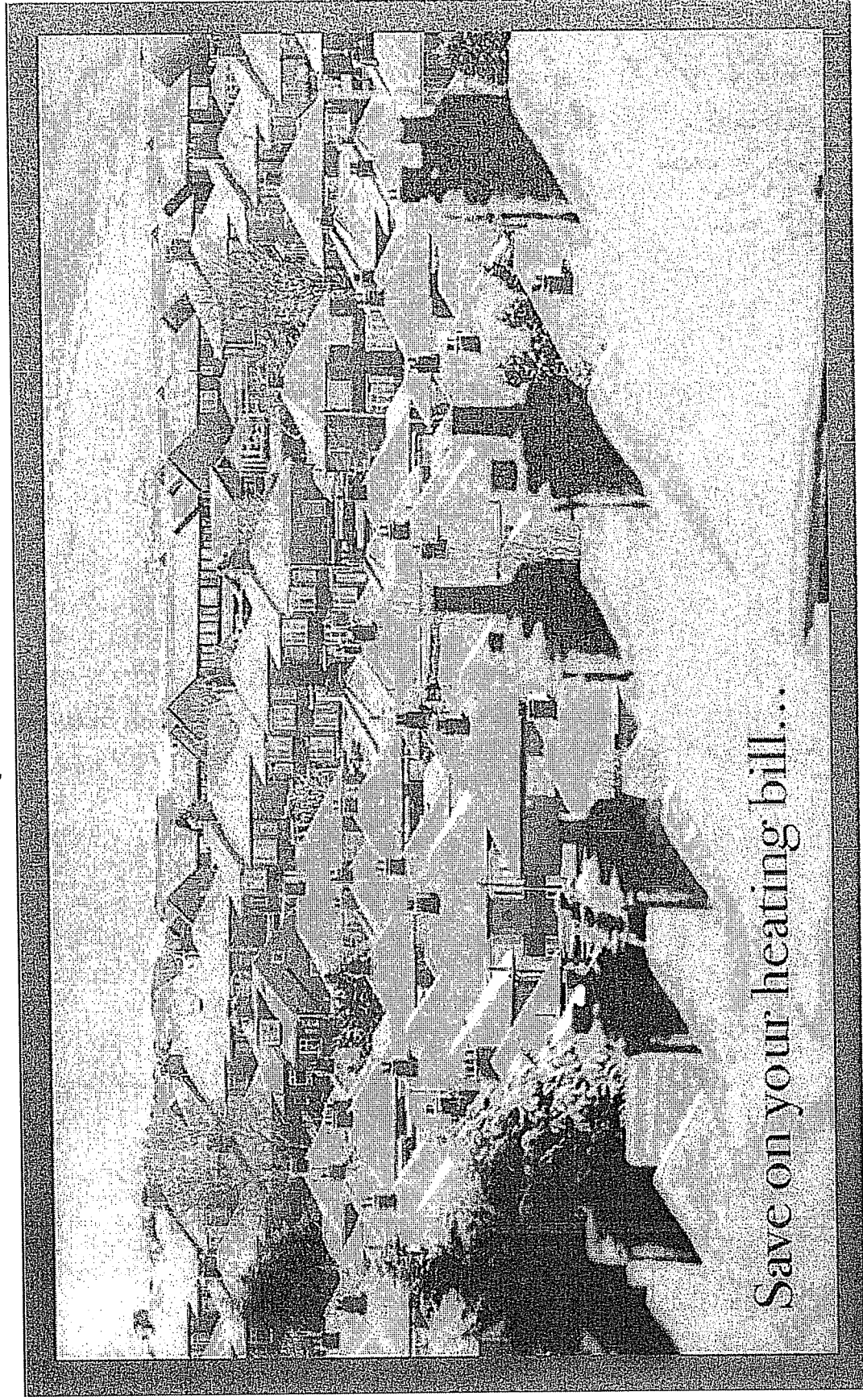
E: [SCO@kent.gov.uk](mailto:SCO@kent.gov.uk) T: 01522 696950



- Solar panels
- Biomass
- Rain water harvesting
- Voltage optimisation
- Green advice
- Heat pumps
- Low energy lighting
- and more...



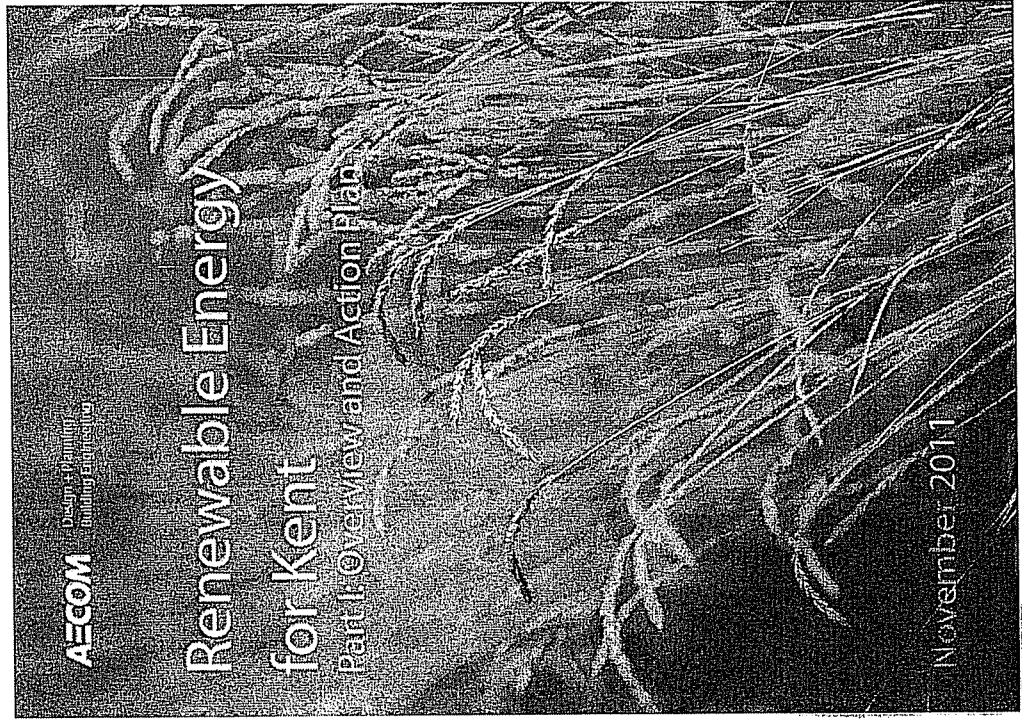
**Saving residents money, tackling fuel poverty  
(16,17)**



---

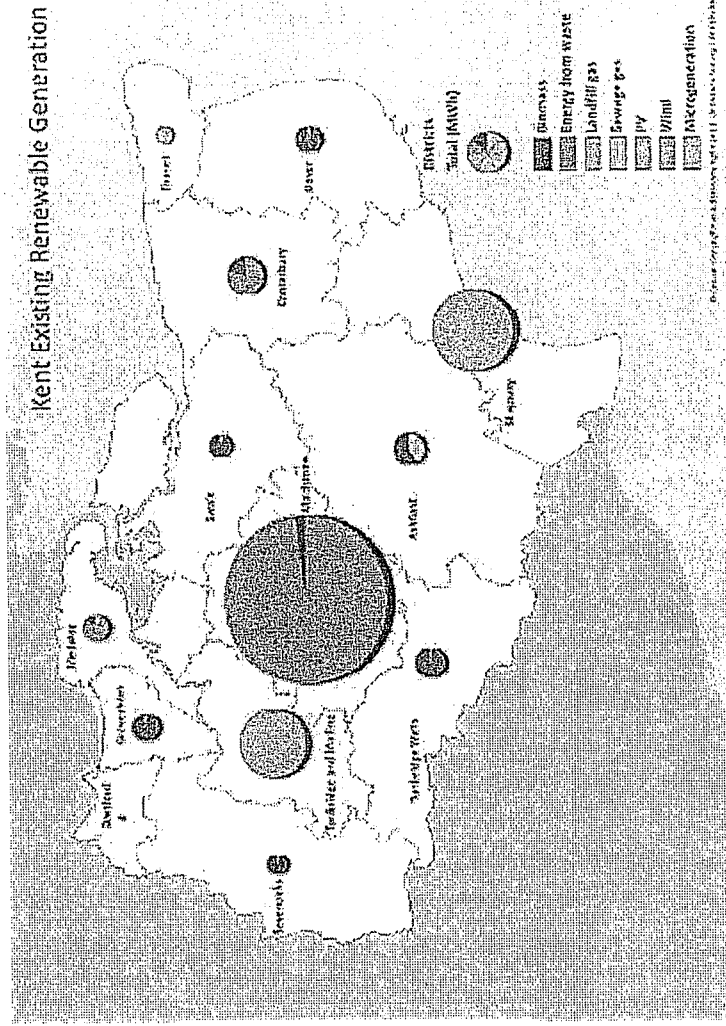
# Areas where challenges remain

- Finance for all types of retrofit
  - Resources
    - Schools
    - Communities
  - Green Deal
  - Electric vehicle charging
  - Planning
-

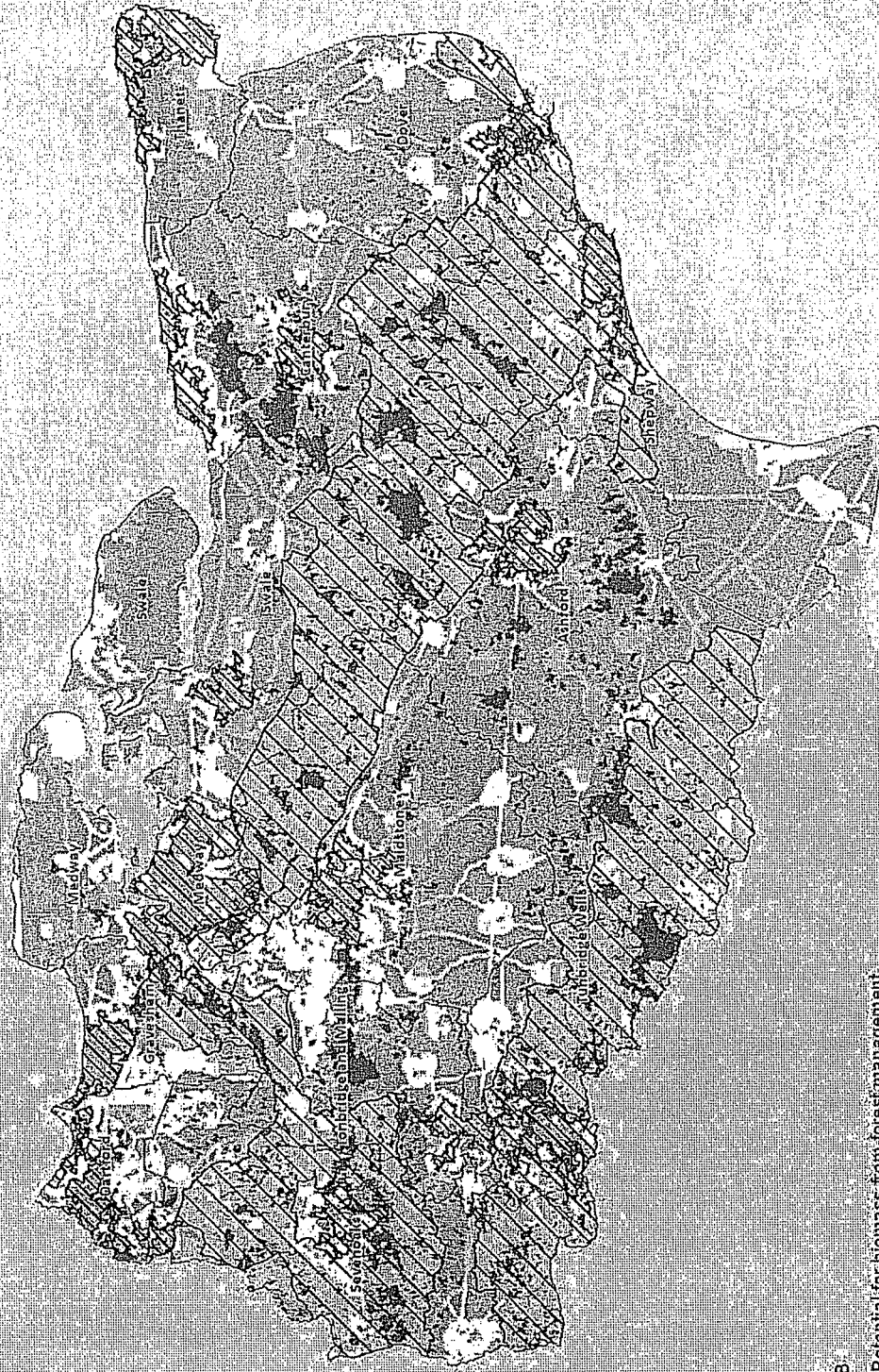


[http://www.kent.gov.uk./environment\\_and\\_planning/environment\\_and\\_climate\\_change/renewable\\_energy\\_study.aspx](http://www.kent.gov.uk./environment_and_planning/environment_and_climate_change/renewable_energy_study.aspx)


# Kent's Existing Renewable Energy Generation



# Energy Opportunities Map





| Action Description  | Main actor(s)                         | Timeframe   | Support required from                    | Priority |
|---|---------------------------------------|-------------|--|----------|
| <br>Develop Vision and Direction | Kent Districts/ Medway Council        | Short-term  |  | High     |
| Develop a strategy to establish a low carbon economy  | KCC                                   | Long-term   | LEP<br>Industry and business             | Medium   |
| Identify deliverable local Allowable Solutions  | Kent Districts/ Medway Council        | Long-term   | KCC                                      | High     |
| Establish a renewable energy economic hub in Kent, initiated by development and servicing of offshore wind farms    | KCC<br>Kent Districts/ Medway Council | Long-term   | Renewable energy<br>technology companies | High     |
| Set planning standards for sites which have a significant ability to deliver renewable energy                       | Kent Districts/ Medway Council        | Long-term   | KCC                                      | Medium   |
| Identify promising areas for community energy schemes   | Kent Districts/ Medway Council        | Medium-term | Community groups                         | Medium   |
| Establish cross boundary planning strategy with surrounding local authorities                                       | Kent Districts/ Medway Council<br>KCC | Long-term   | KCC                                      | Low      |

*Planning and Strategy*



**Partnership Working Unit**

**Create county-wide expertise network**

Establish public sector or community based energy services company (ESCo) for Kent

Establish community investment partnerships for large-scale schemes

Public-private partnerships to deliver difficult renewable energy projects, such as district heating

Provide support for community champions

Develop private sector champions

Kent Districts/ Medway Council

Kent Districts/ Medway Council  
KCC  
Community groups

Energy Developers

Energy Developers  
Kent Districts/ Medway Council

Kent Districts/ Medway Council  
Private sector  
Energy developers

Private sector

Short-term

Long-term

Medium-term

Long-term

Short-term

Medium-term

Energy developers  
Community groups

Leadership within  
community

Renewables champion on  
local authority council

Industry and business

High

High

High

Medium

Medium

Medium



**Education and Employment**

|  |   |             |   |        |
|--|---|-------------|---|--------|
| Provide guidance on appropriate technologies and funding sources to community groups | Energy developers<br>Kent Districts/ Medway Council       | Medium-term | KCC – low carbon communities                            | High   |
| Educate and promote the importance of renewable energy to community members          | Community groups  | Short-term  | Kent Districts/ Medway Council                          | High   |
| Develop renewable energy installation skills locally                                 | Local colleges<br>Energy developers<br>Housing developers | Long-term   |   | Medium |
| Disseminate renewable energy delivery models and case studies for local communities  | Community groups  | Medium-term |   | Medium |
| Establish a database of case studies detailing experience with renewables            | Community groups<br>Kent Districts/ Medway Council        | Medium-term | Industry and business<br>Renewable technology companies | Medium |



*Investment and Resources*

|  |  |             |   |        |
|--|--|-------------|---|--------|
| Install renewable energy on all public council and school properties                       | Kent Districts/ Medway Council/Schools     | Long-term   | Energy developers                                 | High   |
| Coordinate funding pot for public sector   | KCC  | Medium-term |   | High   |
| Develop Kent development capital fund for private sector investment in renewables          | Kent Districts/Medway Council/Universities | Medium-term | Private sector funding                            | High   |
| Pilot projects with self-selecting communities interested in renewable energy              | Community groups                           | Long-term   | Community groups and                              | High   |
| Fund feasibility studies for local energy schemes  | KCC  | Medium-term | CIL   | High   |
| Conduct feasibility studies to decide which strategic projects are worthwhile investing in | Kent Districts/ Medway Council             | Medium-term | Finance South East EU funding                     | High   |
| Set vision and lobby for funding   | LEP  | Long-term   | Carbon Trust                                      | High   |
| Improve energy infrastructure to provide additional grid capacity                          | KCC  | Long-term   | Kent Forum  | Medium |
| Establish support network for evolving renewable energy start-ups                          | Energy Companies                           | Long-term   | Kent Districts/ Medway Council                    | Medium |
| Establish local biomass supply chains  | Locate in Kent Business Forums             | Medium-term | Local renewable technology companies              | Medium |
|  | Forestry Commission Biomass producers      | Medium-term | Farmers<br>ACNB<br>Kent Districts/ Medway Council | Medium |



*Innovation*

|   |   |             |                       |        |
|---|---|-------------|-----------------------|--------|
| Provide independent advice to private sector to provide business case for energy projects | Large energy users  | Medium-term | Industry and business | Medium |
| Create local Innovation hubs, focusing on researching renewable energy                    | Energy focused companies<br>Kent Districts/ Medway<br>Council | Long-term   | Locate in Kent        | Medium |
| Perform energy life cost analysis   | Large energy users  | Medium-term | Industry and business | Medium |
| Market Kent as a place for low carbon living and working                                  | Locate in Kent  | Long-term   | KCC                   | Low    |

---

# Key Questions

- First thoughts
  - Are these the right actions?
    - What's missing
    - What can't be done?
  - How do we communicate the outputs?
    - Stakeholder engagement
    - Website
    - Other opportunities
  - Strategic links
-

---

## Next Steps

- Submit your comments to the consultation
  - Evaluation of comments
  - Draft action plan developed with partners
  - Action Plan consulted
  - Forum agrees action plan
-